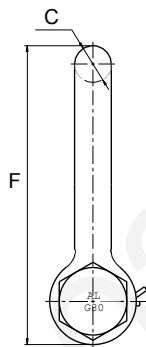
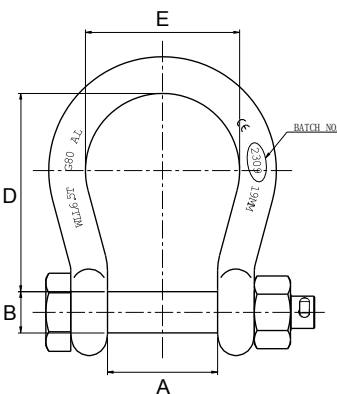


AS/NZS
2741

Certified

G80
Alloy Steel

GRADE 80 FROGMOUTH SHACKLE WITH SAFETY PIN



G80 Frogmouth Safety Pin Bow Shackles are made with a wider mouth over Its Grade S counterpart.

These can be used for lifting applications where a wider width is needed over common shackles, providing more permanent connections to Chain Slings, Synthetic Slings, Wire Rope and other rated fittings within the Civil, Marine, Agricultural, Mining and Engineering Industries. Suitable for equipment that may vibrate to ensure pin will not dislodge during use. The Safety Pin allows the pin to rotate during loading conditions.

- Conforms to AS2741 manufactured from Grade 80 material in Bow configuration with Safety Pin hot dipped galvanized. Marked with work load limit in tonnes, quality grade, batch numbered, nominal size in millimetre and supplier identification on the bow as well as the Load Pin.
- Proof tested to 2 x work load limit, with a minimum break force of 6 x work load limit.
- Test Certificates are available upon request.
- Suitable for lifting applications.

SIZE (mm)	CODE	WLL (T)	Wt. (kg)	DIMENSIONS (mm)					
				A	B	C	D	E	F
22	503725	4.75	2.09	63	25	22	112	88	172.5
25	503728	6.5	3.1	75	28	25	125	105	203.5



8.5T, 9.5T AND 12T AVAILABLE LATER HALF OF 2024

Head Office (NSW)

43 Frank Street
Wetherill Park, NSW 2164
Ph : 02 9757 2277

VIC Office

475A Dohertys Road
Truganina, VIC 3029
Ph : 03 9314 5525

QLD Office

7 Durbell Street
Acacia Ridge, QLD 4110
Ph : 07 3272 0777

WA Office

42 Mulgool Road
Malaga, WA 6090
Ph : 08 9248 6674