

20t TELESCOPIC SPREADER BEAM

Maxirig
QUALITY LIFTING SOLUTIONS



MODEL
TSB1204

SPECIFICATION

Tare Weight:	0.150t (Excl. slings/shackles)
Lifting lugs (top) suit:	17t Grade S bow shackle
Load lugs (lower) suit:	12t Grade S bow shackle
Centre lug suits:	4.7t Grade S bow shackle

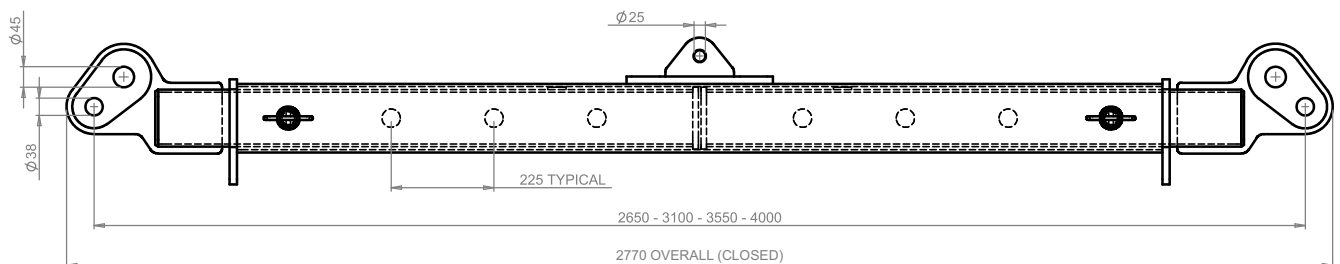
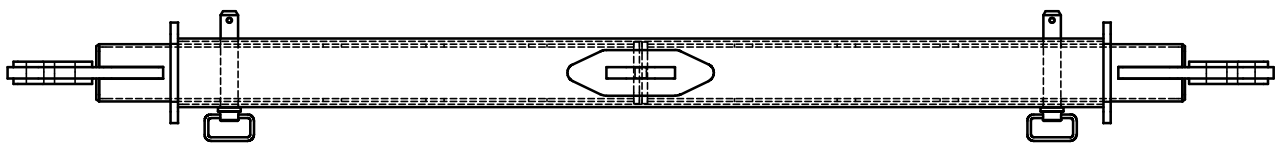
ASSURANCE

Compliance Standard:	AS4991-2004
Proof load tested:	Yes
NDT Weld Inspection:	Yes
Standard Finish*:	Painted (G36 Green)

*Other colours/finishes available on request

LOAD CHART

Span (Mtrs)	WLL (at included sling angle)				Approx. Sling Leg Length (Mtrs)			Approx. Headroom (Mtrs)		
	60°	90°	120°	CENTRE LIFT	60°	90°	120°	60°	90°	120°
2.65m	20t	16t	9t	3.5t	2.7	2.0	1.6	2.4	1.4	0.8
3.1m	20t	16t	9t	3.0t	3.1	2.3	1.8	2.8	1.6	0.9
3.55m	20t	16t	9t	2.6t	3.6	2.5	2.1	3.1	1.8	1.0
4.0m	20t	16t	9t	2.3t	4.0	2.8	2.3	3.5	2.0	1.2



SUPERIOR QUALITY LIFTING PRODUCTS AUSTRALIA WIDE
All Maxirig products are designed and manufactured in Australia by our highly skilled team of engineers

maxirig.com.au